

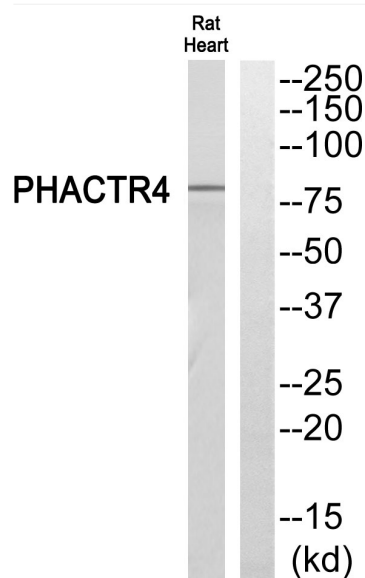


PHACTR4 Polyclonal Antibody

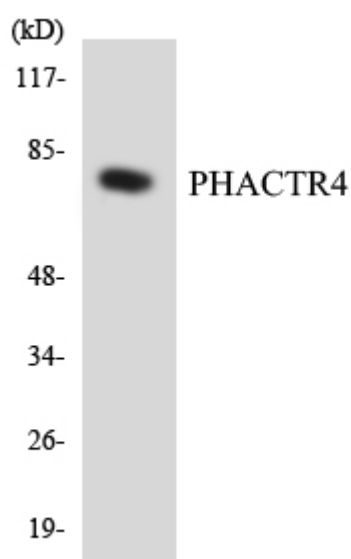
Catalog No	YP-Ab-14908
Isotype	IgG
Reactivity	Human;Rat;Mouse;
Applications	WB;ELISA;IHC
Gene Name	PHACTR4
Protein Name	Phosphatase and actin regulator 4
Immunogen	The antiserum was produced against synthesized peptide derived from human PHACTR4. AA range:363-412
Specificity	PHACTR4 Polyclonal Antibody detects endogenous levels of PHACTR4 protein.
Formulation	Liquid in PBS containing 50% glycerol, 0.5% BSA and 0.02% sodium azide.
Source	Polyclonal, Rabbit,IgG
Purification	The antibody was affinity-purified from rabbit antiserum by affinity-chromatography using epitope-specific immunogen.
Dilution	WB 1:500-2000;IHC-p 1:50-300; ELISA 2000-20000
Concentration	1 mg/ml
Purity	≥90%
Storage Stability	-20°C/1 year
Synonyms	PHACTR4; Phosphatase and actin regulator 4
Observed Band	80kD
Cell Pathway	Cytoplasm . Cell projection, lamellipodium .
Tissue Specificity	Adrenal cortex,Fetal brain,Fetal liver,Skin,Testis,
Function	PTM:Phosphorylated upon DNA damage, probably by ATM or ATR.,similarity:Belongs to the phosphatase and actin regulator family.,similarity:Contains 3 RPEL repeats.,subunit:Binds PPP1CA and actin.,
Background	This gene encodes a member of the phosphatase and actin regulator (PHACTR) family. Other PHACTR family members have been shown to inhibit protein phosphatase 1 (PP1) activity, and the homolog of this gene in the mouse has been shown to interact with actin and PP1. Multiple transcript variants encoding different isoforms have been found for this gene. [provided by RefSeq, Jul 2008],
matters needing attention	Avoid repeated freezing and thawing!
Usage suggestions	This product can be used in immunological reaction related experiments. For more information, please consult technical personnel.



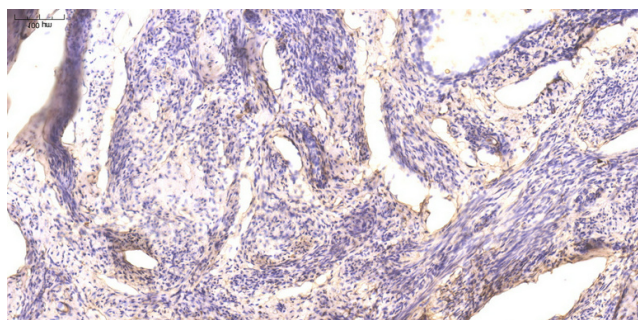
Products Images



Western blot analysis of PHACTR4 Antibody. The lane on the right is blocked with the PHACTR4 peptide.



Western blot analysis of the lysates from HeLa cells using PHACTR4 antibody.



Immunohistochemical analysis of paraffin-embedded human cervical carcinoma. 1, Antibody was diluted at 1:200(4° overnight). 2, Tris-EDTA,pH9.0 was used for antigen retrieval. 3,Secondary antibody was diluted at 1:200(room temperature, 45min).